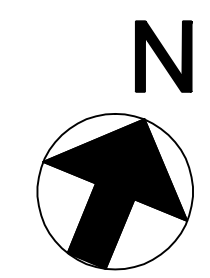
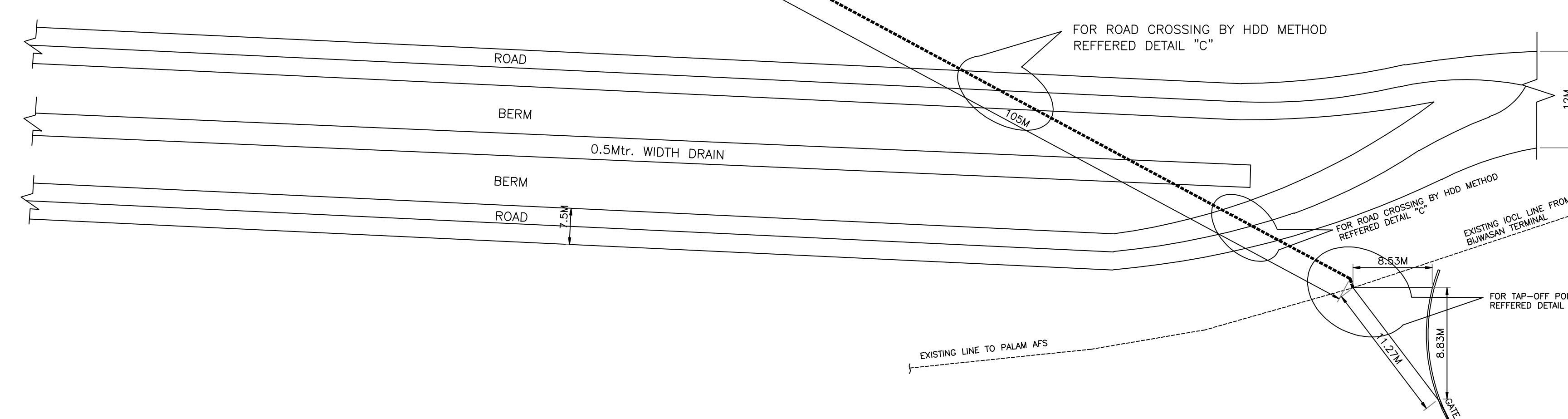
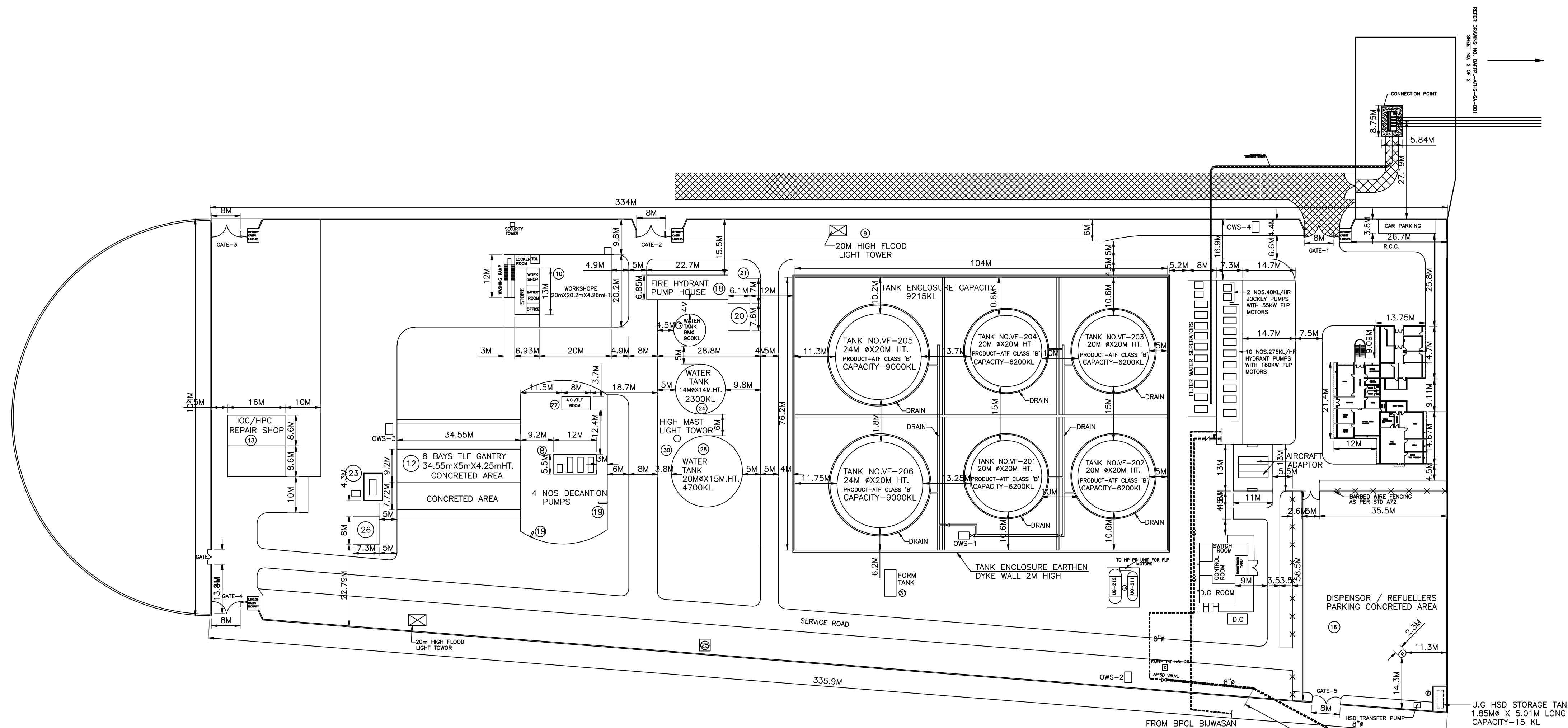


TOTAL PLOT AREA=40748 SQM.



LEGEND

	SIZE	AREA IN SQ.M
1, SECURITY CABIN(4 NOS)	3.8X3.25X4	12.35
2, ADMIN AND CANTEEN BUILDING	-	701.25
3, PUMP HOUSE	50.2X7.3	366.46
4, TESTING RIG	10X10	100
5, LT/HT/DG AND CONTROL ROOM	-	295.17
6, DIESEL TANK FARM	3.97X7.0	27.79
7, ATF STORAGE TANK FARM	104X76.2	8142.48
8, TLD PUMP HOUSE	12mX5.5m	66.0
9, HIGH FLOOD LIGHT TOWER(20m HIGH)	3Nos	-
10, REPAIR SHOP	20X20.2	404
11, METER CALIBRATION UNIT (5KL)	2.0X3.0	6
12, TANK LORRY DECANTING GANTRY	9.2X34.55	317.86
13, REPAIR SHOP HPC/LOC	16.0X8.6X2	137.6
14, U.G. STORAGE TANK(2 NOS)	-	-
15, PARKING AREA	-	-
16, FUELLERS PARKING	-	2662.41
17, WATER STORAGE TANK	9.0mX15m HT	63.61
18, FIRE HYDRANT PUMP HOUSE	22.7X6.85	155.49
19, DIP PLATFORM	1.2X1.2X2	2.88
20, TUBE WELL NO.1	6.1X7.6	46.36
21, OVER HEAD WATER TANK	3.9X3.9	15.21
22, COOLING TOWER	4X6+1.2X1.2	25.44
23, U.G. SLOP TANK	-	-
24, WATER STORAGE TANK	14.0mX15m HT	153.93
25, TUBE WELL NO.2	3.46X3.46	11.97
26, TUBE WELL NO.3	3.46X3.46	11.97
27, A.O./TLF ROOM	8X3.7	29.6
28, WATER STORAGE TANK	20.0mX15m HT	314.15
29, ROAD FOR FIRE TENDER	-	-
30, HIGH MAST TOWER(2 NOS)	30m HIGH	-
31, FORM TANK	3mX15mX3m HIGH	4.5
32, CONNECTION POINT	5.48mX8.75mX5m	47.95



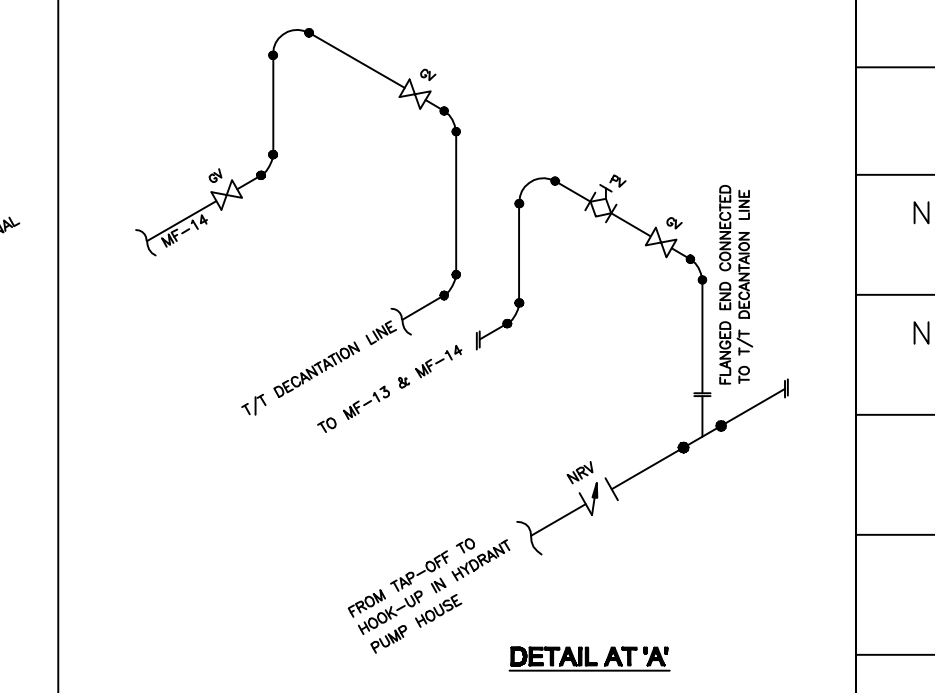
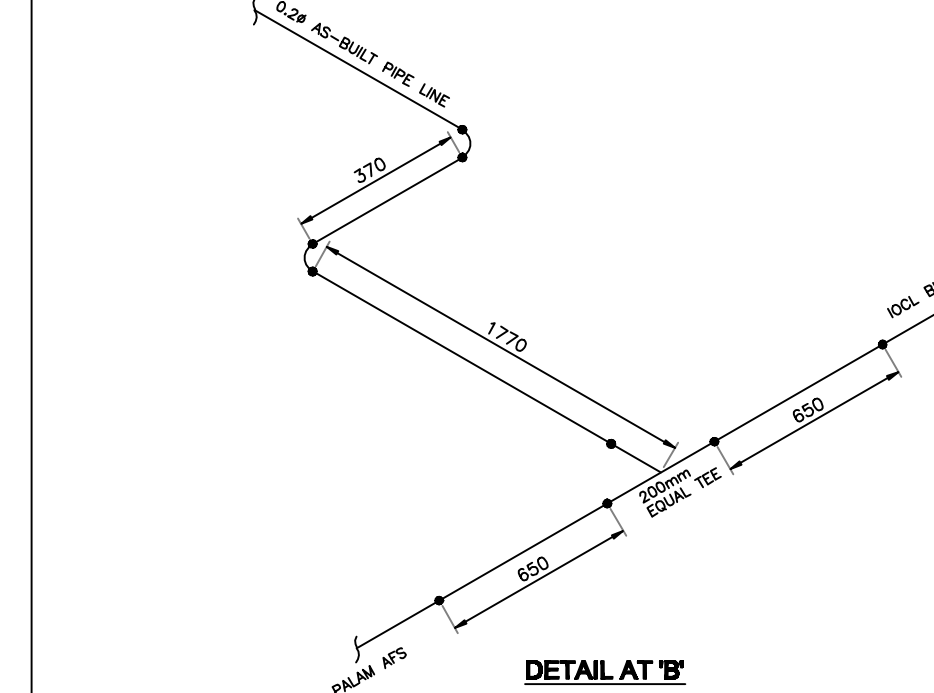
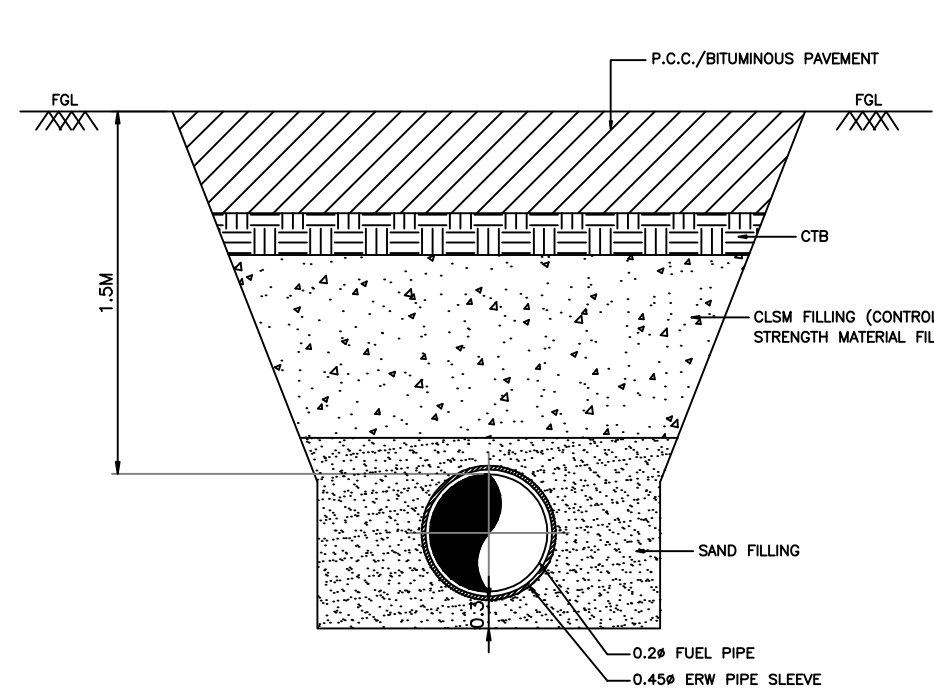
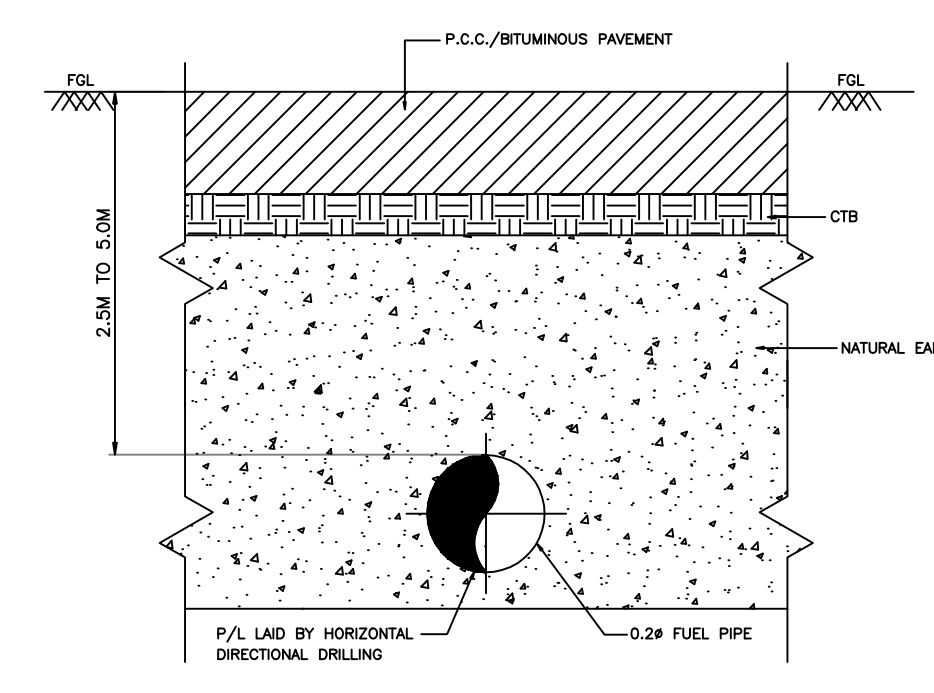
DETAIL OF ABOVE GROUND TANKS

TANK NO.	DIA. X HEIGHT	PRODUCT	CAPACITY
VF-201	20.0m DIA. X 20.0m HEIGHT	ATF(CLASS-B)	6280 KL
VF-202	20.0m DIA. X 20.0m HEIGHT	ATF(CLASS-B)	6280 KL
VF-203	20.0m DIA. X 20.0m HEIGHT	ATF(CLASS-B)	6280 KL
VF-204	20.0m DIA. X 20.0m HEIGHT	ATF(CLASS-B)	6280 KL
VF-205	24.0m DIA. X 20.0m HEIGHT	ATF(CLASS-B)	9000 KL
VF-206	24.0m DIA. X 20.0m HEIGHT	ATF(CLASS-B)	9000 KL

NAME OF BUILDING	USE OF BUILDING
ADMIN AND CANTEEN BUILDING	OFFICE ON GROUND FLOOR, REST ROOM WITH LOCKERS AND CANTEEN FACILITIES ON FIRST FLOOR
REPAIR SHOPS	FOR RUNNING REPAIRS OF MOBILE VEHICLES AND PLANT FACILITIES, (WELDING OR HOT WORK NOT CARRIED OUT)
TESTING RIG	FOR OPERATIONAL TEST OF DISPENSER COMPONENTS UNDER SIMULATED CONDITIONS OF AIRCRAFT REFUELLING

DETAIL OF UNDER GROUND TANKS

TANK NO.	DIA. X HEIGHT	PRODUCT	CAPACITY
UG-211	2.77m DIA. X 19.66m LONG	ATF(CLASS-B)	115 KL
UG-212	4.016m DIA. X 16.80m LONG	ATF(CLASS-B)	200 KL
UG-213	1.84m DIA. X 23.98m LONG	ATF(CLASS-B)	100 KL



SURVEY NO.	
VILLAGE	SHAHABAD MOHMADPUR
NEAREST POLICE STATION	SECTOR-23 DWARKA.
NEAREST RAILWAY STATION	SHAHABAD MOHMADPUR
DISTRICT	NEW DELHI
STATE	NEW DELHI
NAME OF ROAD	SHAHABAD MOHMADPUR

<b>DELHI AVIATION FUEL FACILITY(P) LTD.</b>	
<b>SUBJECT</b>	
<b>GENERAL LAYOUT FOR AVIATION FUELLING STATION</b>	
<b>TITLE</b>	
<b>AVIATION FUELLING STATION</b>	
<b>IGIA-T2 AND T3, NEW DELHI</b>	
REV. NO2 22.11.2011	P/L ADDED-IOC
REV. NO1 28.06.2010	INITIAL RELEASE
REVISION	DESCRIPTION
28-06-2010	APPD:
1:700	DRAWING NO: DAFFPL-AFH8-GA-001
PREPARED BY:	SHEET NO: 1 OF 1
TECHNO CAD COMPUTERS NEW DELHI MO. NO. 9818349216	